



# COM-COM

## PLAY AND LEARN COMMUNICABLE DISEASES

Before and after playing this card game, please do infection prevention measures, such as washing your hands and disinfecting the cards.

PLAY SAFE, STAY SAFE.

**YCVU CDC** CC BY-NC-ND 4.0

This work is licensed under Creative Commons Attribution-NonCommercial-NoDerivatives 4.0 International. You are free to share and redistribute the material in any medium or format under the following terms: attribution, non commercial, and no derivatives.

For the details, visit the link bellow.

<https://creativecommons.org/licenses/by-nc-nd/4.0/>

# How to Play

## Prepare the Deck!

Cut the cards with scissors or cutters. You will make 60 cards from 8 pages of A4 size paper with your friends.

## Know the Cards!

Under the basic rules, the cards fall into 3 categories.



### Germs Card

the microorganisms like viruses and bacteria that cause infectious diseases

5 kinds × 5 colors = 25 cards

Influenza virus  
SARS-CoV-2  
Norovirus  
Mycoplasma pneumoniae  
Streptococcus pneumoniae

×

Blue  
Green  
Purple  
Orange  
Yellow



### Attack Card

the lifestyle and actions that one can do for infection prevention

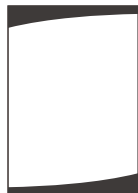
\* This mark [x] indicates its effectiveness to the germs

5 kinds × 5 colors = 25 cards

Washing hands  
Disinfect with alcohol  
Disinfect with bleach  
Antibiotics  
Social distancing

×

Blue  
Green  
Purple  
Orange  
Yellow



### Event Card

what happens in society as a result of an infectious disease epidemic and how to deal with it

10 kinds = 10 cards

Buy up  
Emergency declaration  
Long distance trip  
Close, Closed, and Crowded  
When did you wash your hands?

Liar  
Doubt  
Quarantine  
Examine & Consult  
Quarantine fatigue

## Know the Rules!

The general rules are similar to Uno.

Shuffle the deck well and deal cards to each player: 5 per player for a group of 5 or less players and 4 per player for a group of 6 or more players. After dealing out, take one card from the deck and put it faceup (upcard).

The player who has the most germs cards in her hand starts the game and the players take turns clockwise. On your turn, you play a card (or multiple cards) from your hand. When you have no card to play, you draw one card from the deck. If the card you draw can be played, you may play it. Otherwise, the turn moves to the next player.

You win when you play the last card of your hand. The game ends when the next-to-last player wins, and the last remaining player loses. If you play an event card as the last card, you draw one card from the deck as a penalty.

Here are the rules of playing a card in your hand.

You can play multiple cards at once if they are the same kind.

You can play any categories/kinds/colors of cards on top of any kinds of the event cards, and vice versa.

- |                                      |                                                         |
|--------------------------------------|---------------------------------------------------------|
| On top of attack cards, you can play | the same kind of attack cards (any color).              |
|                                      | the same color of attack cards (any kind).              |
|                                      | <u>the same color of germs cards (any kind).</u>        |
| On top of germs cards, you can play  | the same kind of germs cards (any color).               |
|                                      | the same color of germs cards (any kind).               |
|                                      | <u>the effective kinds of attack cards (any color).</u> |

If you play an ineffective attack card on top of a germs card, you draw one card from the deck as a penalty.

Now play...



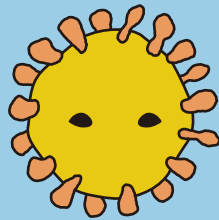
## Influenza virus



Droplet / Contact

Blue

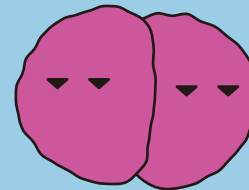
## SARS-CoV-2



Droplet / Contact

Blue

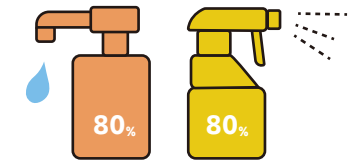
## Streptococcus pneumoniae



Droplet / Endogenous / Contact

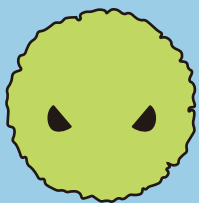
Blue

## Disinfect with alcohol



Blue

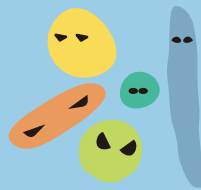
## Norovirus



Oral / Airborne / Contact

Blue

## Mycoplasma pneumoniae



Droplet / Contact

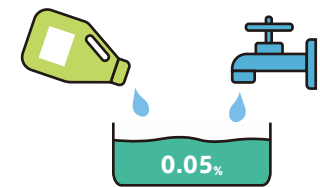
Blue

## Washing hands

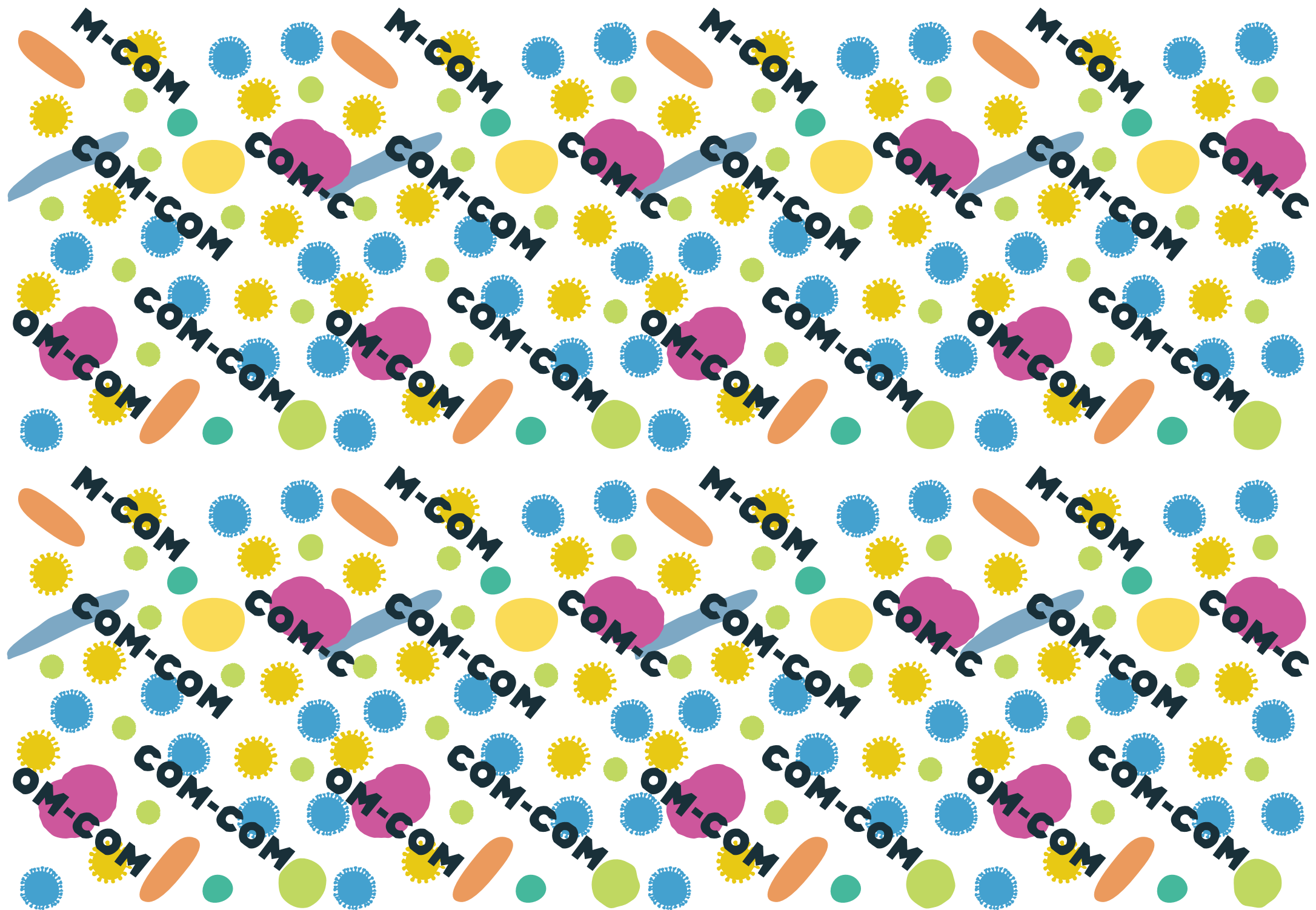


Blue

## Disinfect with bleach



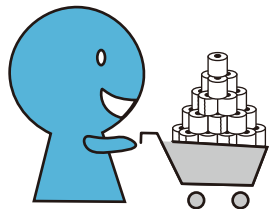
Blue



Antibiotics

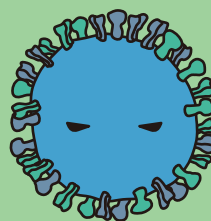


Buy up



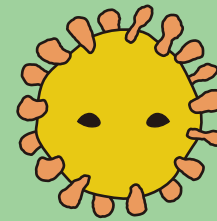
Next player draw one card.

Influenza virus



Droplet / Contact

SARS-CoV-2



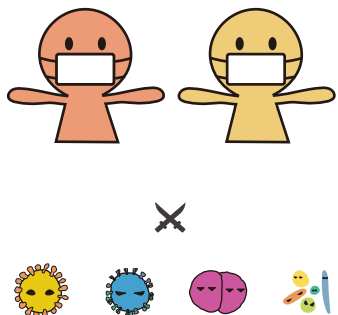
Droplet / Contact

Blue

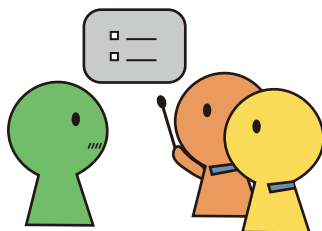
Green

Green

Social distancing



Examine & Consult



See all the cards in one player's hand.

Norovirus



Oral / Airborne / Contact

Mycoplasma pneumoniae

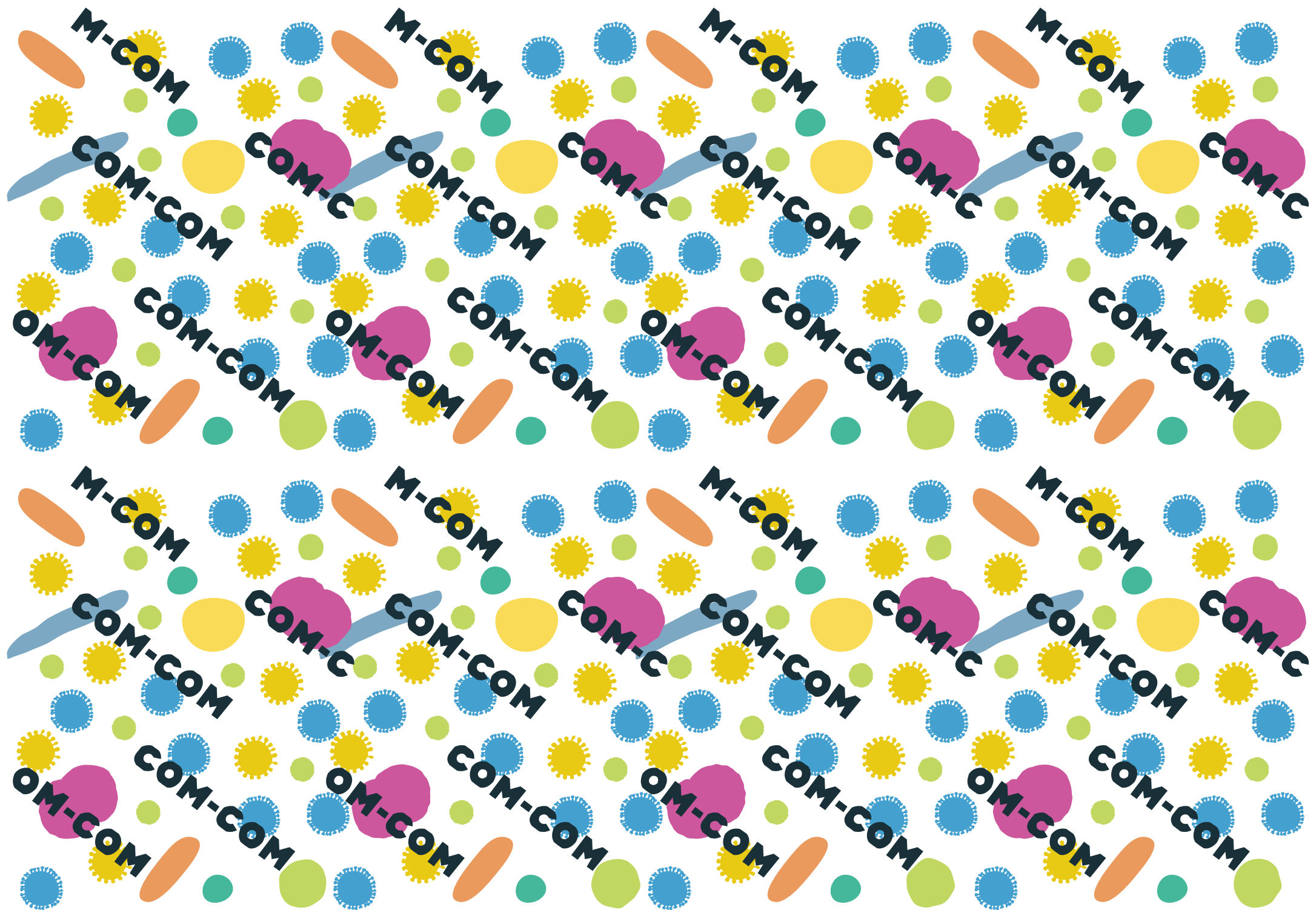


Droplet / Contact

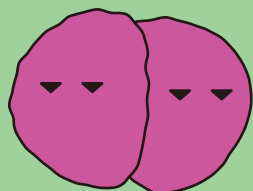
Blue

Green

Green



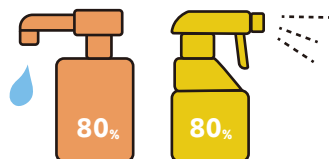
Streptococcus pneumoniae



Droplet / Endogenous / Contact

Green

Disinfect with alcohol



Green

Antibiotics



Green

Liar



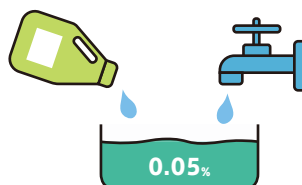
Next player draw two cards.

Washing hands



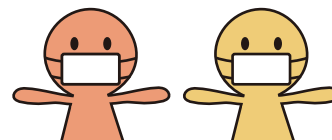
Green

Disinfect with bleach



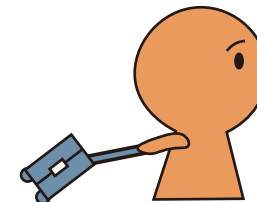
Green

Social distancing



Green

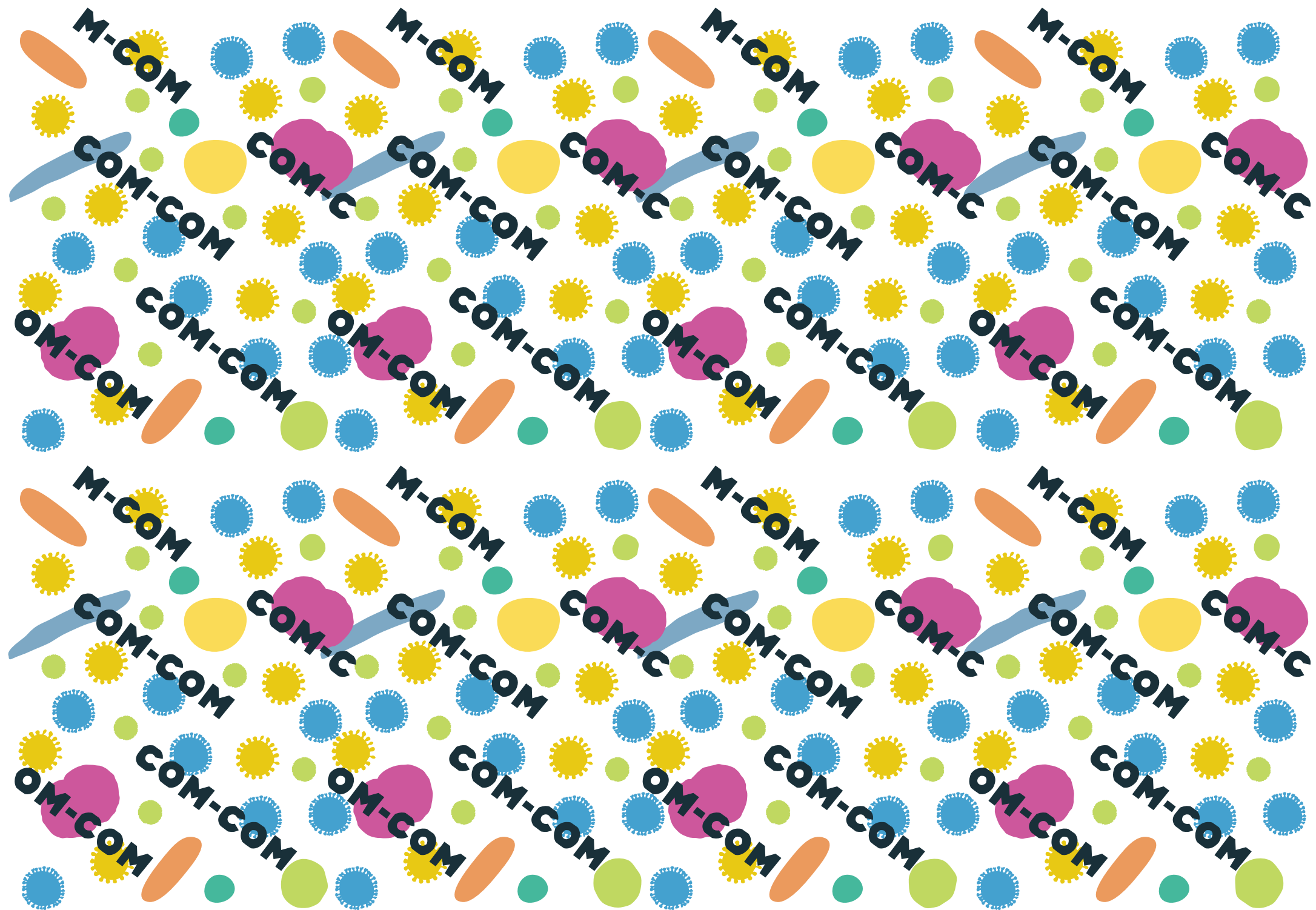
Long distance trip



Skip the next player.

Green







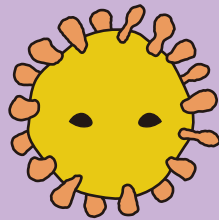
## Influenza virus



Droplet / Contact

Purple

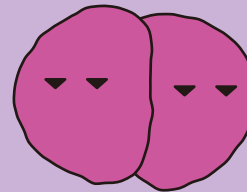
## SARS-CoV-2



Droplet / Contact

Purple

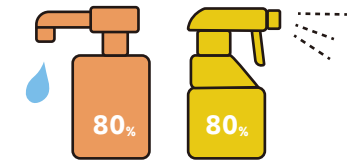
## Streptococcus pneumoniae



Droplet / Endogenous / Contact

Purple

## Disinfect with alcohol



Purple

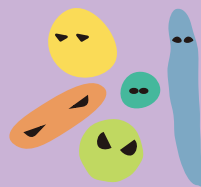
## Norovirus



Oral / Airborne / Contact

Purple

## Mycoplasma pneumoniae



Droplet / Contact

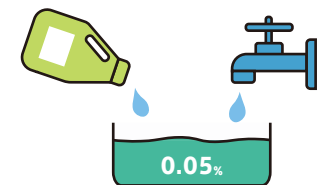
Purple

## Washing hands

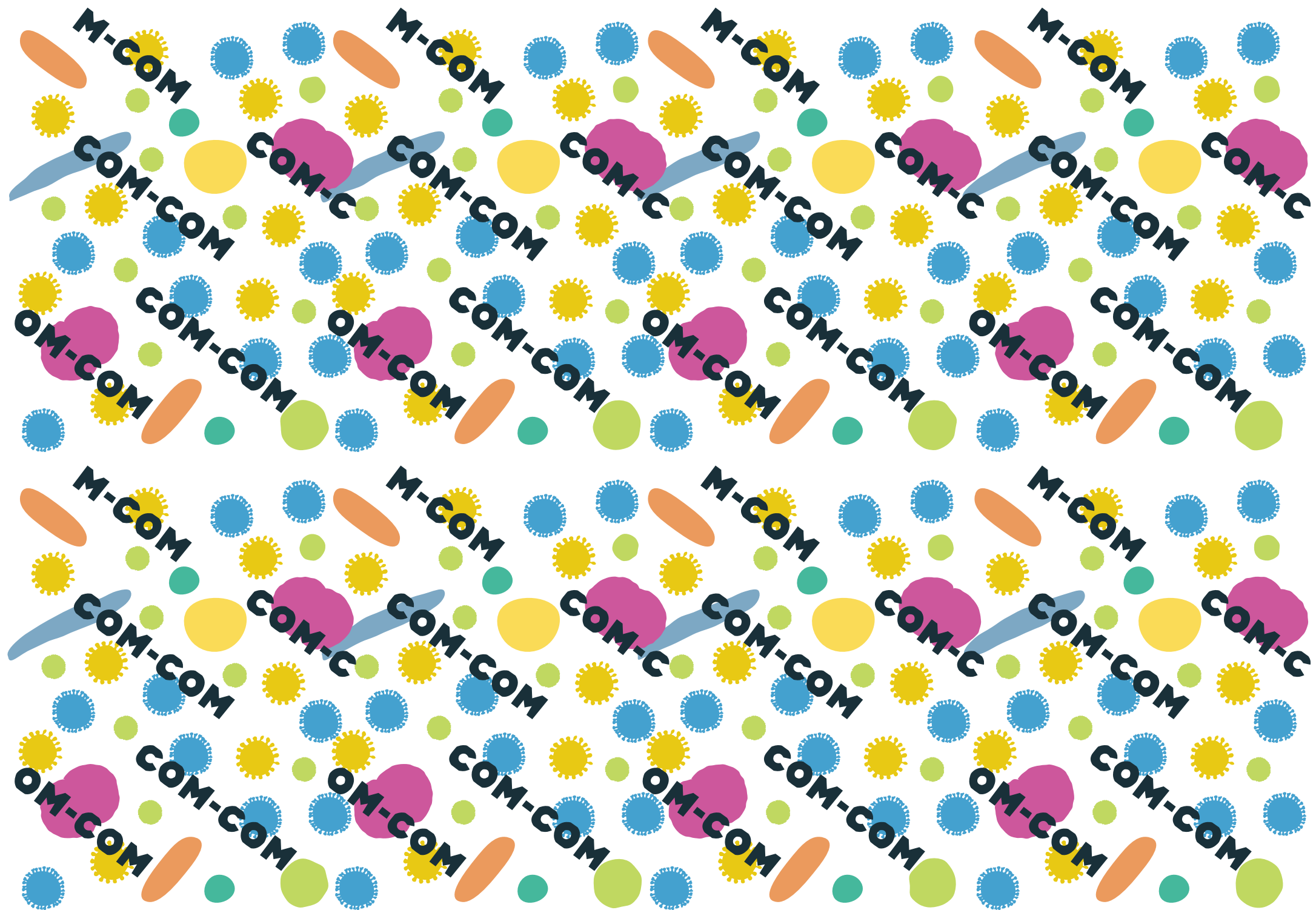


Purple

## Disinfect with bleach



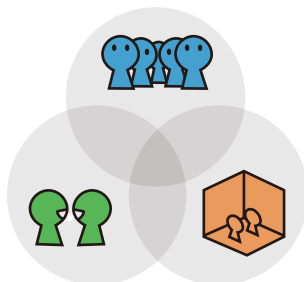
Purple



## Antibiotics

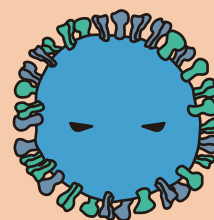


## Close, Closed, and Crowded



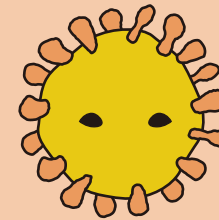
One player draw three cards.

## Influenza virus



Droplet / Contact

## SARS-CoV-2



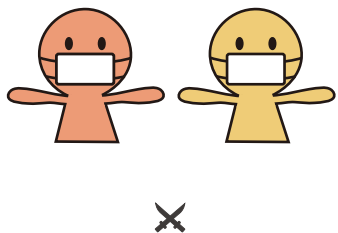
Droplet / Contact

Purple

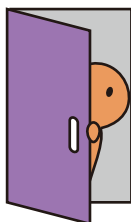
Orange

Orange

## Social distancing

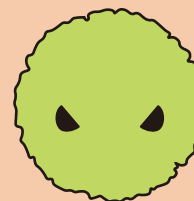


## Quarantine



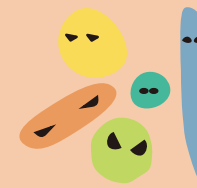
Every player decide whether to quarantine (pass) or play a germs card.

## Norovirus



Oral / Airborne / Contact

## Mycoplasma pneumoniae

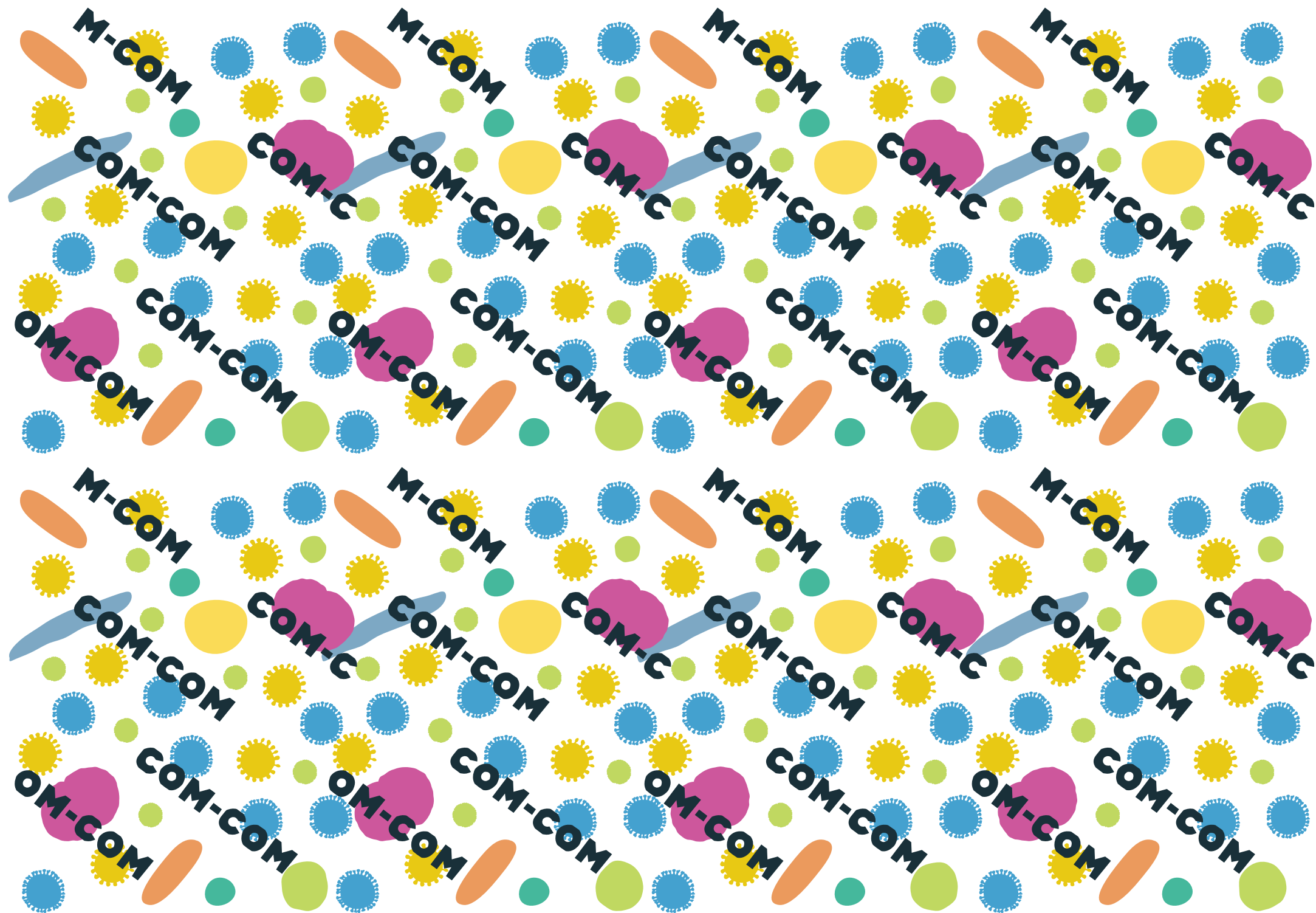


Droplet / Contact

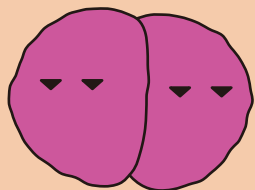
Purple

Orange

Orange



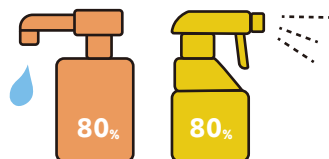
Streptococcus pneumoniae



Droplet / Endogenous / Contact

Orange

Disinfect with alcohol



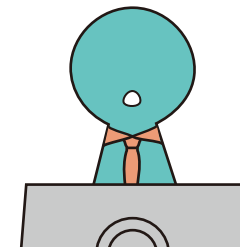
Orange

Antibiotics



Orange

Emergency declaration



Skip all the players.

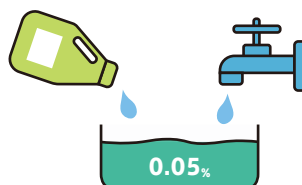


Washing hands



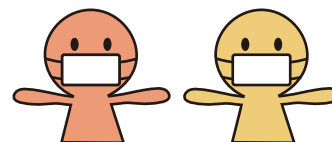
Orange

Disinfect with bleach



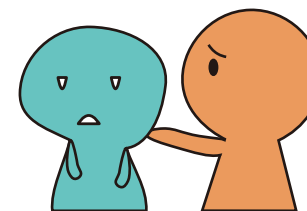
Orange

Social distancing



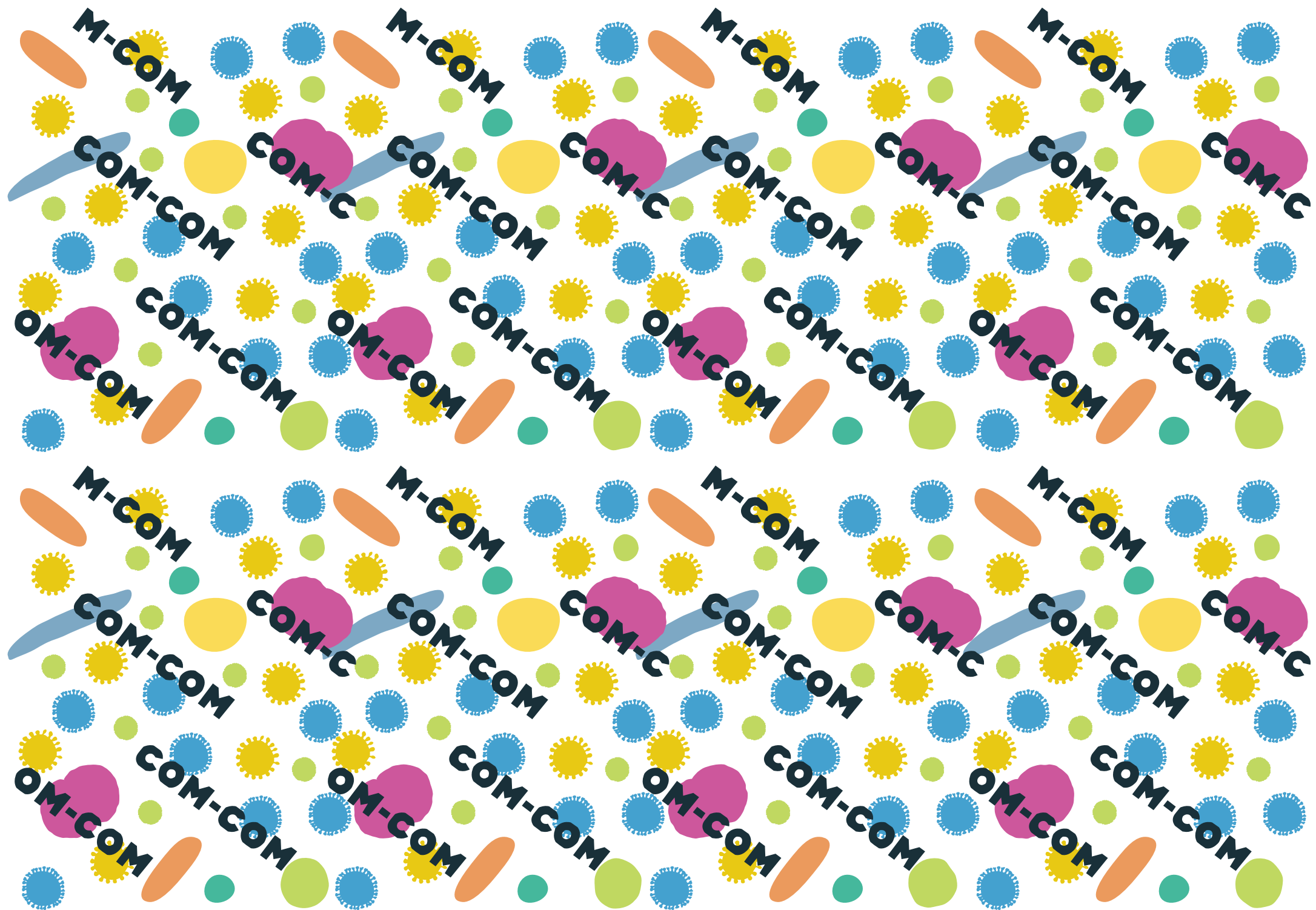
Orange

Quarantine fatigue

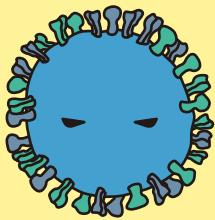


Next player draw one card  
from the current player's hand.





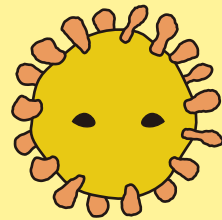
## Influenza virus



Droplet / Contact

Yellow

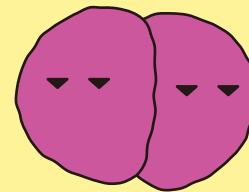
## SARS-CoV-2



Droplet / Contact

Yellow

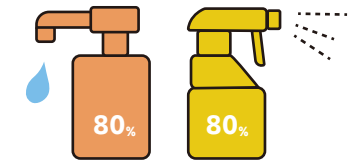
## Streptococcus pneumoniae



Droplet / Endogenous / Contact

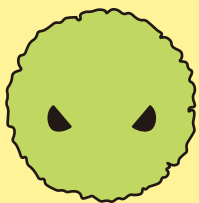
Yellow

## Disinfect with alcohol



Yellow

## Norovirus



Oral / Airborne / Contact

Yellow

## Mycoplasma pneumoniae



Droplet / Contact

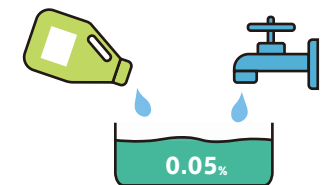
Yellow

## Washing hands



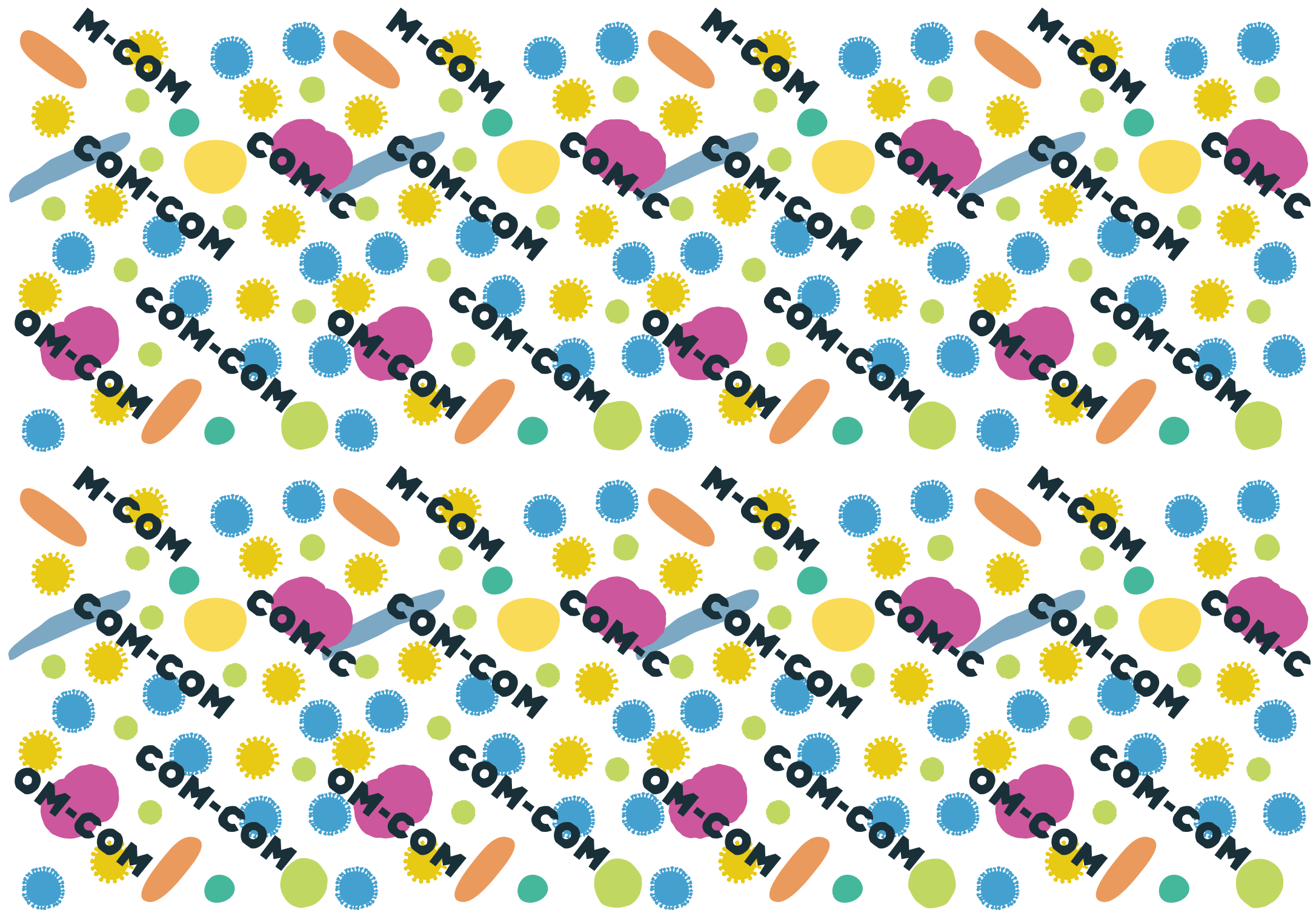
Yellow

## Disinfect with bleach



Yellow



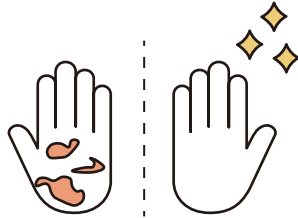


### Antibiotics



Yellow

### When did you wash your hands?



One player draw as many cards as how many hours have passed since the last washing hands.

## House Rules

### Original Event Card

Think about the social chaos that is happening or may happen because of an epidemic and its impact on your friends, and make it into an original event card writing the title, illustration, and rule.

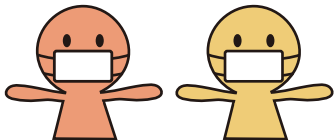
If the rule imposes a penalty, it is prohibited to impose an excessive penalty based on the following criteria: no more than three cards draw per person, no more than one skip per person, etc.

### Play in English

If English is not the first language in your group you play with, play the game speaking only in English.

Draw one card as a penalty if a player says something in a language other than English.

### Social distancing



Yellow

### Doubt



Previous player draw one card if he answers wrong to the question the current player asked about the card he just played.

